

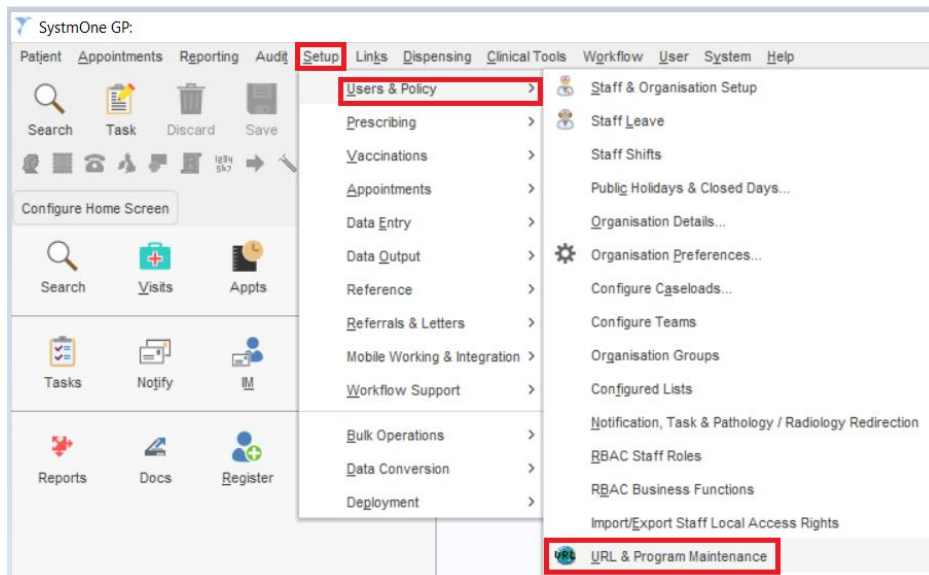
Interweave Portal SystemOne Context Launch Setup Guide (Manual Setup)

1 Background

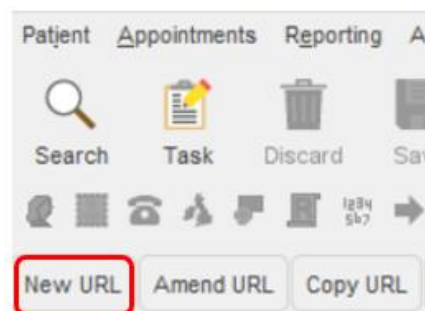
This Guide shows how to add a toolbar button in SystemOne which will launch the Interweave Portal with the patient you have open in SystemOne.

2 To configure contextual launch:

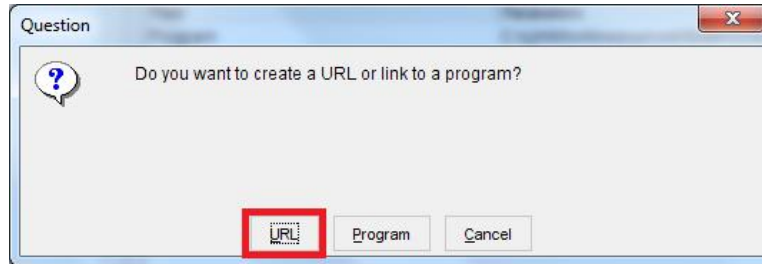
2.1 Within SystemOne *navigate* to: Setup > Users & Policy > URL & Program Maintenance



2.2 *Select* the **New URL** button



2.3 Click URL when presented with this popup



2.4 The Create URL screen will display – Enter details as follows:

2.4.1 Name: Interweave Portal

2.4.2 Icon: Pick an icon from the list

2.4.3 Description: Type **Launch Interweave Portal**

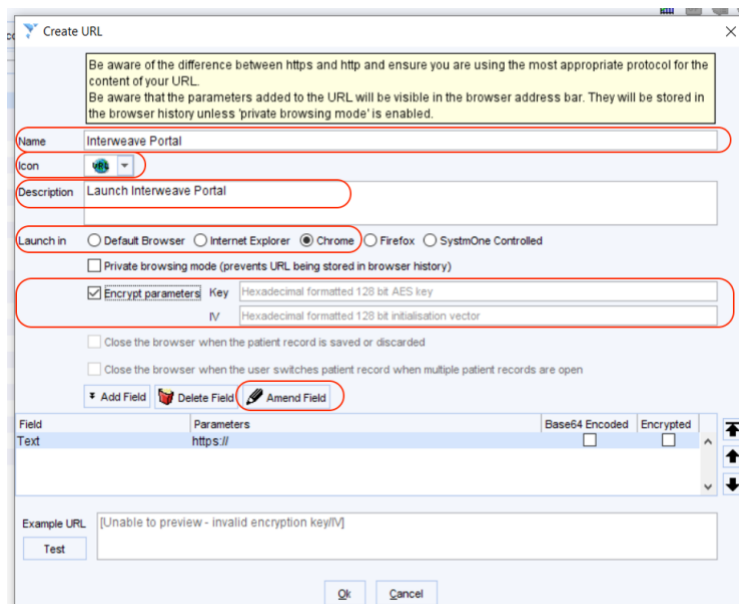
2.4.4 Launch in: Select **Chrome**

2.4.5 Check the **Encrypt parameters** box then enter

Key (Hexadecimal formatted 128 bit AES key)

IV (Hexadecimal formatted 128 bit initialisation vector)

These codes will be provided securely, in separate emails by someone in the Interweave Team. **These codes should never be shared with anyone else, and the emails should be deleted after they have been entered into this screen.**



Be aware of the difference between https and http and ensure you are using the most appropriate protocol for the content of your URL.
Be aware that the parameters added to the URL will be visible in the browser address bar. They will be stored in the browser history unless 'private browsing mode' is enabled.

Name: Interweave Portal

Icon: [Icon]

Description: Launch Interweave Portal

Launch in: Default Browser Internet Explorer Chrome Firefox SystemOne Controlled

Private browsing mode (prevents URL being stored in browser history)

Encrypt parameters

Key: [Hexadecimal formatted 128 bit AES key]

IV: [Hexadecimal formatted 128 bit initialisation vector]

Close the browser when the patient record is saved or discarded

Close the browser when the user switches patient record when multiple patient records are open

Field: Parameters | Base64 Encoded | Encrypted

Text: https://

Example URL: [Unable to preview - invalid encryption key/IV]

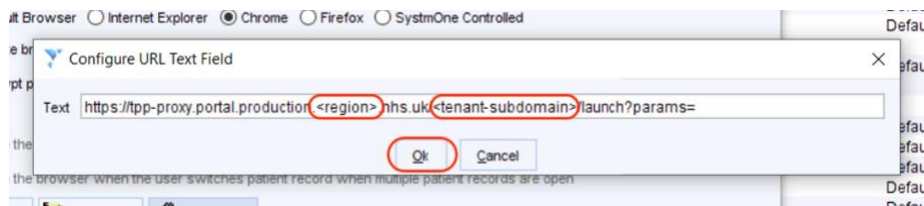


2.4.6 [Click Amend Field](#) and [type](#) the following **URL** under **Parameters** column:

<https://tpp-proxy.portal.production.<region>.nhs.uk/<tenant-subdomain>/launch?params=>

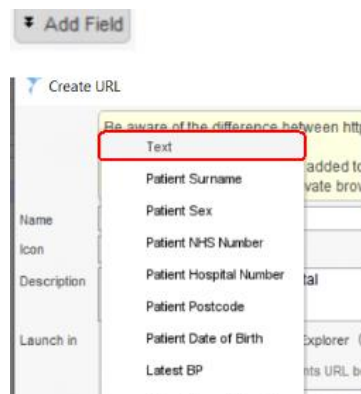
Your <region> is your local care record group: either YHCR, LLRCR, or NottsCR. If you are unsure of your region ask your local ICB project manager.

Your <tenant-subdomain> will be picked by your organisation in the onboarding project phase and will be provided to you by your ICB project manager, via the Jira ticket raised to set up your tenancy in the Interweave Portal.

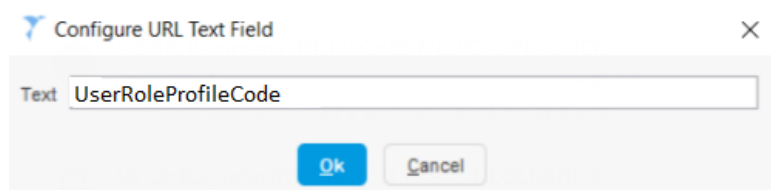


2.5 Setting up the parameters:

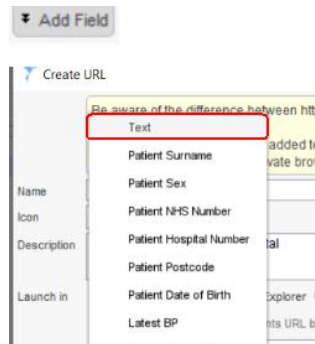
2.5.1 [Click Add Field](#) and [select Text](#)



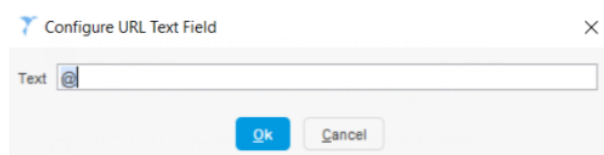
2.5.2 [Add](#) the text – **UserRoleProfileCode** then [click OK](#)



2.5.3 [Click Add Field](#) and [select Text](#) again



2.5.4 [Type](#) the @ symbol then [click OK](#)



2.5.5 [Click Add Field](#) and [select User Role Profile Code](#) from the list. [Check](#) the Encrypted column



2.5.6 Repeat the Add Field and Text process for each of the following in order. The finished result will look as shown in the table below:-

Field	Parameters	Base64 Encoded	Encrypted
Text	https://tpp-proxy.portal.production.<region>.nhs.uk/<tenant-subdomain>/launch?params=	N	N
Text	UserRoleProfileCode	N	N
Text	@	N	N
User Role Profile Code		N	Y
Text	@	N	N
Text	SystmOneUsername	N	N
Text	@	N	N
SystmOne username		N	Y



Field	Parameters	Base64 Encoded	Encrypted
Text	@	N	N
Text	PatientNHSNumber	N	N
Text	@	N	N
Patient NHS Number	Format '1234567890' (No Spaces)	N	Y
Text	@	N	N
Text	PatientSurname	N	N
Text	@	N	N
Patient Surname		N	Y
Text	@	N	N
Text	PatientDateOfBirth	N	N
Text	@	N	N
Patient Date Of Birth	Format '83-07-24'	N	Y
Text	@	N	N
Text	Timestamp	N	N
Text	@	N	N
Timestamp	Format '2021-12-20T12:07:16' in UTC	N	Y
Text	@	N	N
Text	Username	N	N
Text	@	N	N
Username		N	Y
Text	@	N	N
Text	Password	N	N
Text	@	N	N
Password		N	Y
Text	@	N	N
Text	ODS	N	N
Text	@	N	N
Text	<YOUR ODS CODE>	N	Y

NOTE: The very last field you should change from <YOUR ODS CODE> to the ODS code for your organisation.

2.5.7 When complete [click OK](#)